

# Pateley Bridge and the First World War

KEEP AN EYE OUT FOR THESE AS YOU GO ALONG



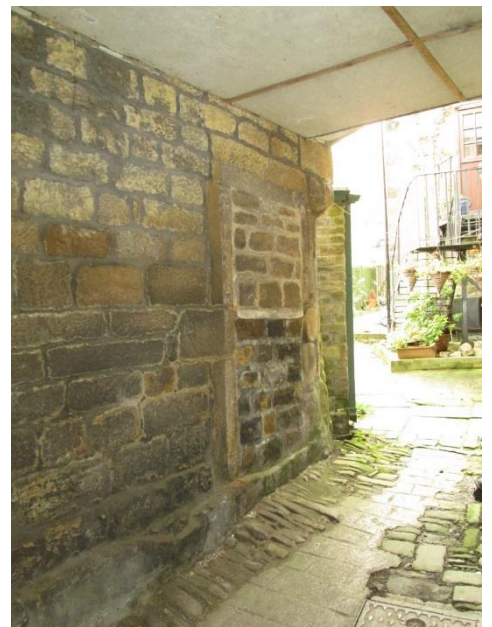
Original road surfaces



Strange metal objects in walls – what might they have been used for?



Lintels with no window or door connected



Looking down CHURCH STREET from CHURCH YARD



**POLICE STATION**

Cross CHURCH ROAD safely



**FOG CLOSE**

WHAT CAN WE DEDUCE FROM LOOKING AT THIS BUILDING?

CAN YOU SPOT THE ACORN?

**Captain Frederick George Phillips, 5<sup>th</sup> Battalion West Yorkshire Regiment**

Adopted son of Mr G. Lumsden, V.D., Physician and Surgeon of Fog Close, Pateley Bridge. The Captain was killed at the Battle of Ypres in France on the 25 April 1918 Aged 32, and is remembered on the Tyne Cot Memorial



**COURT HOUSE.**

WHEN WAS THE COURT HOUSE BUILT?

WHAT OTHER SYMBOL ON THE BUILDING SHOWS THAT THIS WAS A COURTHOUSE?



**ODDFELLOWS HALL (1859)**

WHO DO YOU THINK ODDFELLOWS WERE?!



**MASONIC LODGE**

WHERE DOES THE NAME 'FREEMASONS' CAME FROM?



**PLAYHOUSE**

Walk down CHURCH STREET taking great care, turn left to FOXES HEAD WELL where it is safe to stand.

WHY IS IT CALLED FOXES HEAD WELL?

Looking around TOP of the HIGH STREET



**BARCLAYS BANK**

HOW OLD DO YOU THINK THE BUILDING IS?



## METHODIST CHAPEL

HOW IS THE BUILDING DIFFERENT FROM THE PARISH CHURCH?



## OLD BREWERY site



WHY WAS BREWING  
COMMON IN THE DALES?

The outline of the old  
brewery building walls can  
still be seen in the ground of  
the garden.

The brewery closed in 1912,  
just before the FWW, when  
Metcalf family went  
bankrupt. They also owned  
Glasshouse and other mills  
plus Scotgate Ash Quarry.

### Captain George Christopher Metcalfe (1888-1919) Royal Army Medical Corps

Served right through the Great War, in France and on the Somme before going to India. Whilst on duty at Lucknow (India) in 1919, he was cycling when he hit a stone and was thrown off his bike and killed. He was the son of John Hawkrigde Metcalfe & his wife Adeline, formerly of Grassfield House, later of Castlestead. John was a Director of the Brewery, and also Captain of the 1<sup>st</sup> Pateley Bridge West Yorkshire Regiment of Territorials in the late C19th.





## HIGH STREET



WHAT HAS CHANGED?

WHAT IS STILL THE SAME?



## OLD SHOPS

CAN YOU SPOT NUMBER 43?

HOW CAN WE TELL THESE ARE SOME OF THE OLDEST BUILDINGS IN PATELEY BRIDGE?

*1<sup>st</sup> shop – **OLDEST SWEET SHOP** sweet shop from 1827*

DOES ANYONE KNOW THE DATE THE BUILDING WAS BUILT?

*Building dated 1660 – over the door. Possible traces of an even older house in the gable end*

RUN IN 1913 BY MRS ROSIE LAYFIELD

*2<sup>nd</sup> shop – **APOTHECARY'S HOUSE** (2 houses together) 17<sup>th</sup> century*

WHY IS THERE A MULLIONED WINDOW UNDER THE STEPS?

In 1913 the building was run as two shops

- Upper shop was run by Jim Raw.
- Lower shop was run by George Shillito – a decorator

**Private Herbert Shillito, of the Labour Corps, formerly of the 14<sup>th</sup> Battalion, of the King's Own Yorkshire Light Infantry**

Herbert lived in Leeds with his wife Lily and young son George. He was the son of Richard & Emily Shillito, Painter and Decorator of High Street, Pateley Bridge. Herbert died of Pneumonia on the 28<sup>th</sup> October 1918 in Leeds, whilst serving with his Regiment.



3<sup>rd</sup> – NOW **MARK RICHARDS CLOCKS** & NEXT DOOR HOUSE

In 1913 the building was split in two:

- Upper shop was a drapers run by Thomas Handley
- Lower shop was a grocers run by the Ray's

4<sup>th</sup> - NOW **RICHARD SHILLITO**

From beginning of the 20<sup>th</sup> Century until 2002 it was the RICHMOND SHOE SHOP with own cobblers workshop below

**Turn into PARK ROAD.**



**MEMORIAL HALL**

WHY IS IT CALLED THE MEMORIAL HALL?



**GINNELS**

WHAT IS A GINNEL?

DO YOU KNOW ANY OTHER NAMES FOR GINNELS?

WHY MIGHT THE GATEWAYS HAVE COBBLES IN THE MIDDLE OF THE ROAD BUT SLABS ON THE SIDE?

WHAT DO YOU THINK GINNELS AND YARDS WERE FOR?

WHERE WOULD WE HAVE WATER CLOSETS, COOL DAIRIES & WASH HOUSES NOW?

HOW MANY PATELEY BRIDGE GINNELS DO YOU RECOGNISE?



Walk down **BACK HIGH STREET** turn left onto **MILLFIELD RD** and cross road to gathering point at the stone trough (opposite newsagents)



### **LOWER HIGH STREET**

HOW MANY OF THE SHOPS CAN YOU SPOT?



### **PET SHOP WAS EDWARD CARLING TAILORS SHOP**

The Archway, now filled in, led through to JIM RAW'S SLAUGHTER HOUSE

From the window along the alley Mrs Summersall sold roast beef and peas to take away.



### **THE PHARMACY WAS THE SUPPLY STORES FOR ROBINSONS OF OTLEY**

Behind this was housed the Mechanics Institute from 1884 after it left the cocoa house



### **AMVOC WAS 1913 THACKREY SUMMERSALL'S DRAPERS BUSINESS**

Behind this was the 1<sup>st</sup> primitive Methodist chapel (new one built in 1859)

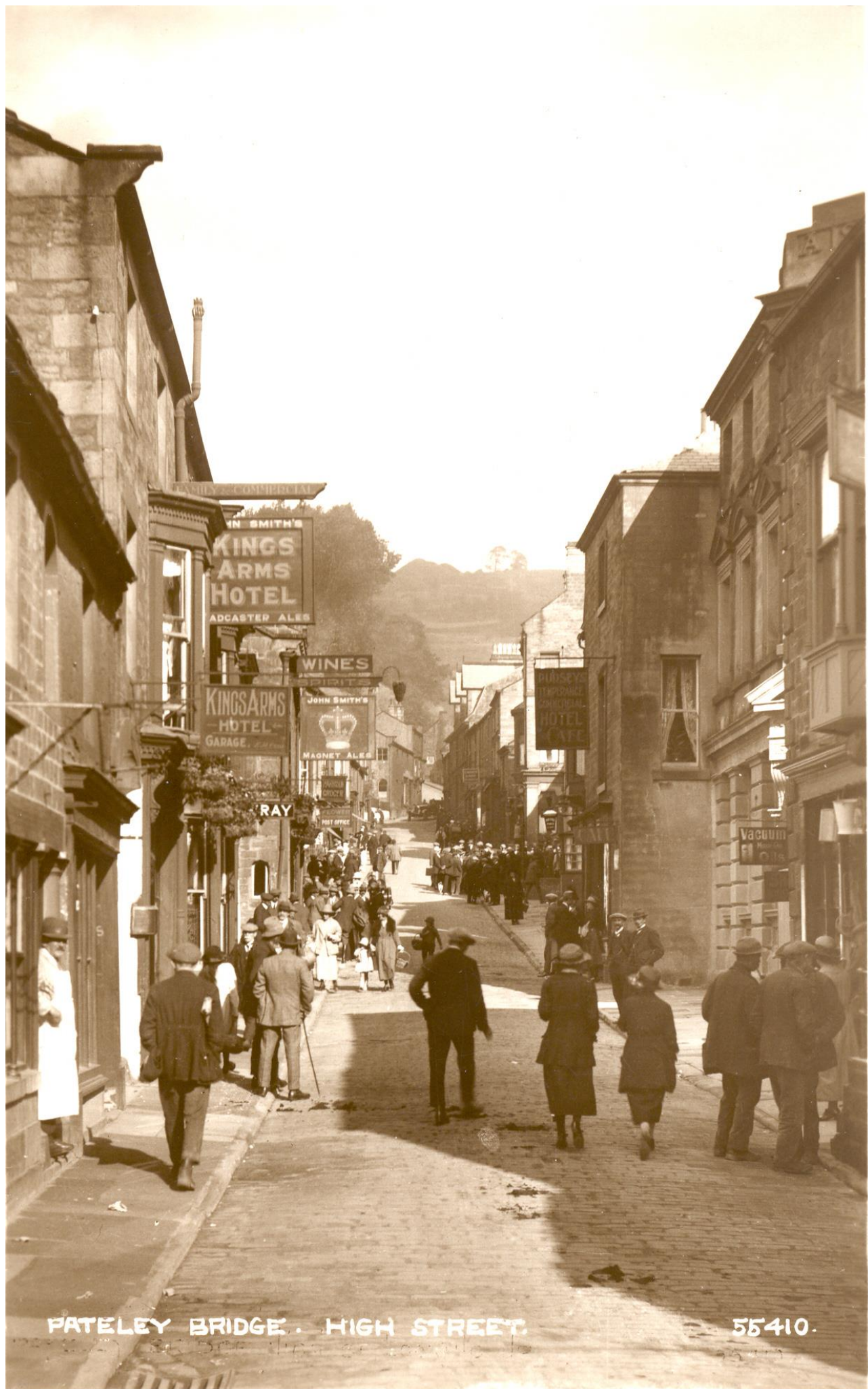


**POST OFFICE** - WAS A PRINTING BUSINESS, BOOK BINDER, NEWSAGENT, STATIONER AND LENDING LIBRARY AND POST OFFICE! RUN BY E BARNES



**CROWN INN** - LICENSEE WS BROWDER





PATELEY BRIDGE. HIGH STREET.

55410.



**Lance Corporal Claude Middleton Simpson of the Royal Fusiliers.**

Son of Alfred & Ada Simpson, Printer of High Street, Pateley Bridge. In 1911 Claude was a Shop Assistant in a Tailoring business in Manchester.

He was the husband of Hannah Eleanor Simpson of Manchester, and he died from wounds on 11 April 1917 Age 25. He is remembered on the Duisans British Cemetery in France.



**BAKEHOUSE** WAS A TEMPERANCE CAFÉ OWNED BY GEORGE PUDSEY  
IN 1913 IT SERVED DINNERS, LUNCHES, TEAS, CHOICE CONFECTIONARY AND BREAD MADE ON  
THE PREMISES AND WAS ADVERTISED AS A HOTEL



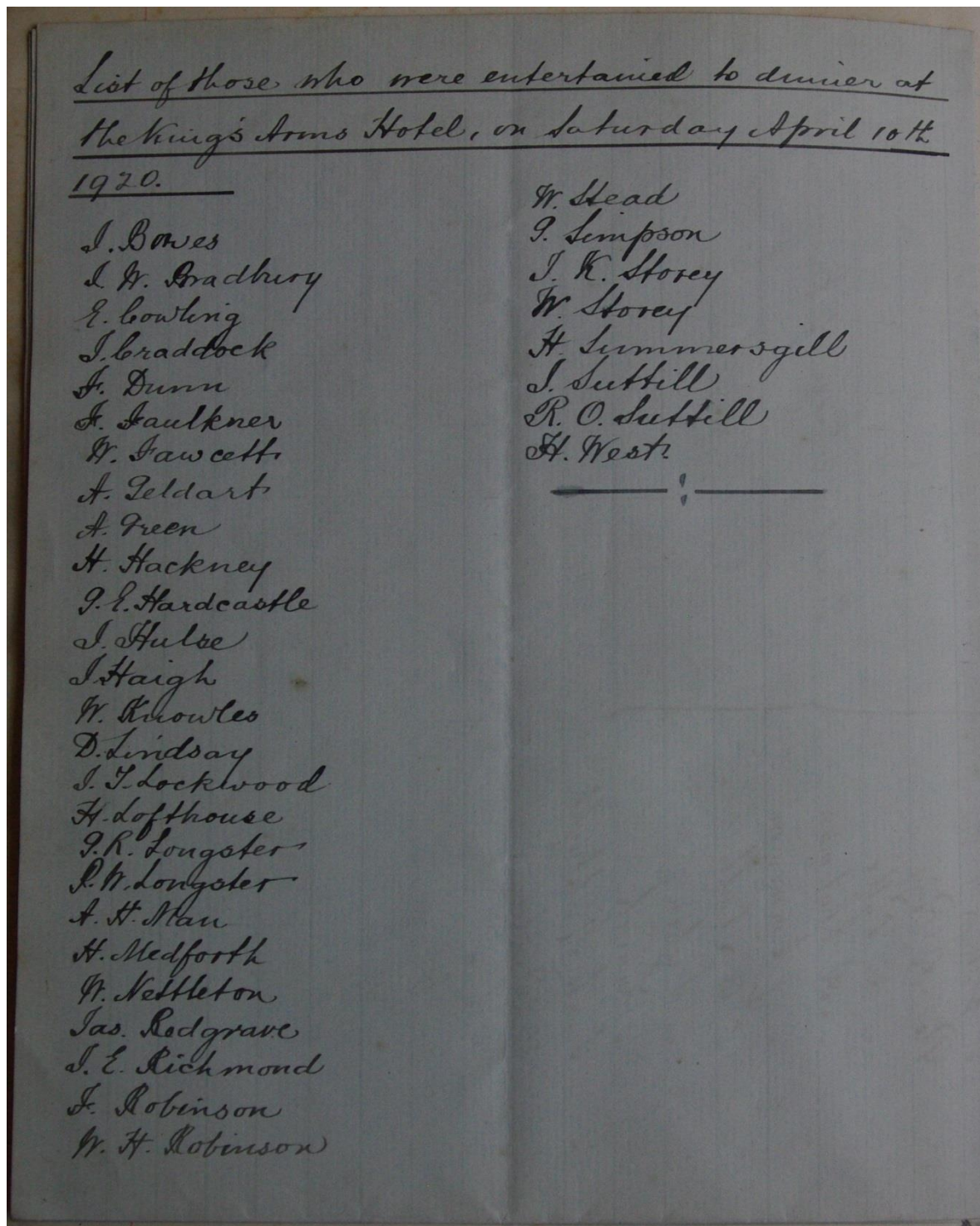
**FORMER HSBC BANK** – BUILT IN 1896 AS YORKSHIRE BANK





## KINGS HOUSE – (KINGS ARMS HOTEL)

In 1919 it hosted celebratory dinner for returning local service men – 164 soldiers plus organising committee sat down in 2 sittings



List from Nidderdale Museum War Committee files to show some of the invitees

### Private Henry Walker, 8<sup>th</sup> Battalion of the East Yorkshire Regiment

Son of John & Nancy Walker, in 1891 he was the Innkeeper of the Bay Horse Inn, High Street (demolished to make way for Southlands Car Park Entrance).

Henry was killed on the 14 July 1916 at the Battle of the Somme, and “Remembered with Honour” on the Thiepval Memorial in France.

**Private Robert Edward Lawson (1899-1918) Northumberland Fusiliers**

Son of David & Ellengor Lawson, who in 1911 was the Innkeeper of the Bay Horse Inn, High Street. Robert was a Telegraph boy in Pateley Bridge before the War.

**Pioneer Thomas Verity of the Royal Engineers**

Son of Joseph Topham Verity, Druggist & Wine Merchant of the High Street, and his wife Elizabeth Ann. Thomas was a Chemist & Druggist Assistant before the War, presumably working for his Father.

Thomas returned home after the War, and was award the British War Medal and the Allied Victory Medal.



**WEATHERHEADS and OLD MARKET PLACE**

What is now Weatherhead's Butchers is now in the middle of terrace of shops but was originally the end of the terrace. It was a still a butchers but run by Joseph Summersall there was also a house on the opposite side of the road.

The Weatherhead family did have a butchers business in 1913, further down the hill towards the bridge

**Private Walter E Weatherhead, Royal Army Medical Corps**

Son of Henry & Ann Weatherhead, lived at Book House Farm, later moving to Bruce House, Wath Road, Pateley Bridge. Henry traded as a Butcher at the bottom of the High Street, where the business still continues today.

Walter returned from the War, but died at the age of 30 in 1924. He is buried in Pateley Bridge Cemetery, with his parents.

In 1913, there was a large market place behind the spar and newsagents. The High Street was formerly known as Market Street.

The Market Place is now a housing block on Back High Street





## RAILWAY STATION



The railway arrived in Pateley Bridge on May 1<sup>st</sup> 1862 after strenuous efforts by George Metcalfe for 40 years! Passenger line ran for 89 years and goods line for 102 years.

WHY WAS THE RAILWAY SO IMPORTANT TO PATELEY BRIDGE AND NIDDERDALE?



Walk over the BRIDGE to RECREATION GROUND



RECREATION GROUND / BAND STAND

A  
**PUBLIC MEETING**

will be held in the

**ODDFELLOWS HALL,  
PATELEY BRIDGE,**

**ON TUESDAY, 11TH FEB., 1919**

To consider what steps shall be  
—taken to provide a suitable—

**MEMORIAL OF THE  
SAILORS & SOLDIERS**

From BISHOPSIDE & BEWERLEY,  
Who have laid down their lives in the service of their country

---

THE CHAIR WILL BE TAKEN AT 7-30 p.m., by  
**T. E. YORKE, ESQ., J.P., D.L.**

---

It is hoped that every Adult Inhabitant will Endeavour  
to be present.

*W. B. BOORD, Hon. Sec.,  
Pateley Bridge War Committee.*

R. Ackrill, Typ., Pateley Bridge.





## MEMORIAL



There was dissatisfaction in town over the slow progress of building a War Memorial by 1920, so three local ex-servicemen built one from snow, with bits of coal for the lettering. They built the snow memorial in the old coal yard.



The War Memorial features a huge lump of natural stone from Middleton Quarry, Beverley. The Memorial was paid for by public subscription.





## DRILL HALL



**The Accrington Pals Drill Hall at Bull Bridge, Accrington**

WHAT IS A DRILL HALL?



## MILLFIELD ROAD

How can you tell if a house was lived in by:

- Rich people,
- Business owners,
- Mill and quarry workers,
- Poorer people?

WHAT TYPES OF HOUSING ARE THESE?



## COCOA HOUSE

WHY WOULD IT BE CALLED THE COCOA HOUSE?



## FEAST FIELD







## KING STREET

WHAT HAS CHANGED?

WHAT HAS STAYED THE SAME?



## ST CUTHBERTS SCHOOL

HOW CAN YOU TELL IT WAS BUILT IN THE VICTORIAN TIMES?



## WORKHOUSE



The main building closed as a workhouse in 1914.

WHAT DO YOU THINK HAPPENED TO THE PAUPERS AFTER 1914?

### 1881 Census: Residents of Pateley Bridge Union Workhouse

Name Staff	Mar	Age	Sex	Relation	Occupation	Birthplace
Henry HEPWORTH	M	67	M	Head	Workhouse Master (Munic)	Wakefield, York
Hannah HEPWORTH	M	68	F	Wife	Workhouse Matron	Bramley, York
Jane BRITTON	U	48	F		Workhouse Nurse	Pateley Bridge, York
Jane METCALFE	U	22	F		Workhouse General Serv	Pateley Bridge, York
<b>Inmates</b>						
John ABBOTT	U	27	M	Pauper	Inmate	Dacre Banks, York
Richard ABBOTT	U	32	M	Pauper	Inmate	Dacre Banks, York
Jane BAKE	U	42	F		Inmate	Pateley Bridge, York
Mary BLAKEBOROUGH	W	71	F	Pauper	Inmate	Pateley Bridge, York
Thomas BROOK		48	M		Labourer	Bradford, York
Thomas COWLING	U	79	M	Pauper	Inmate	Felbeck, York
Francis DOBBY	U	27	M		Labourer	Lowbening, Lincoln
George DOBBY	U	29	M	Head	Labourer	Lowbening, Lincoln
Joseph ELLIS	U	38	M	Pauper	Inmate	Dacre Banks, York
Thomas GIBSON		9	M		Labourer	Preston, Lancashire
Jacob HARDCASTLE	W	71	M	Pauper	Inmate	Pateley Bridge, York
Jane HARDCASTLE	U	35	F	Pauper	Inmate	Pateley Bridge, York
Joseph HARGRAVES	M	70	M	Pauper	Inmate	West End, York
Joseph HARRISON	U	53	M	Pauper	Inmate	Pateley Bridge, York
Isabella HOLDSWORTH	U	44	F	Pauper	Inmate	Pateley Bridge, York
Horner HORSEMAN	W	82	M	Pauper	Inmate	Darley, York
Annie HULLAH	U	32	F	Pauper	Inmate	Pateley Bridge, York
Sarah HULLAH		10	F	Pauper	Scholar	Pateley Bridge, York
William HULLAH	M	49	M	Pauper	Inmate	Felbeck, York
William JACKSON	W	63	M	Pauper	Inmate	Felbeck, York
Elizabeth MC NEIL		26	F		Labourer	Liverpool, Lancashire
Owen QUININ	U	59	M	Pauper	Inmate	Roscommon, Ireland
Anthony RISHWORTH	M	49	M		Inmate	Darley, York
William SCRIVENER	M	78	M	Pauper	Inmate	Feolley, Lincoln
Annie STOTT		10	F	Pauper	Scholar	Leeds, York
Hannah SUMMERSGILL	U	53	F		Inmate	Pateley Bridge, York
James TAYLOR	U	27	M		Labourer	Hull, York
David WALKER		12	M	Pauper	Scholar	Pateley Bridge, York
Robert WHITEHEAD	M	46	M	Pauper	Inmate	Greenhowhill, York
Thomas WIGGLESWORTH	M	70	M		Inmate	Thornthwaite, York
Samuel WILKINSON	W	60	M	Pauper	Inmate	Dacre Banks, York

Total residents: 35



### Map 1: Historical development of Patelev Bridge